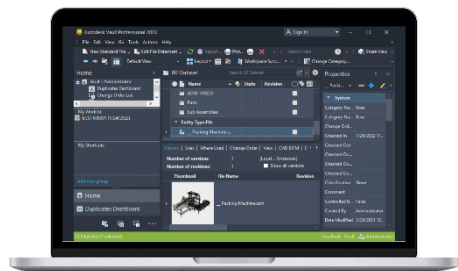


# What's new in Vault 2023

# Vault 2023: Collaboration is easier than ever

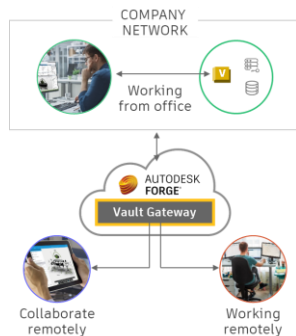
Continues to deliver a more modern, connected, and insightful experience



**Authors**

## Focus on the work you love

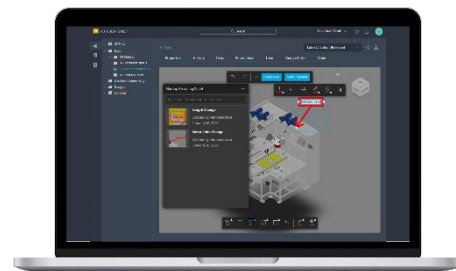
Improved AutoCAD integrated data experience, additional Model State support, and user interface enhancements



**Administrators**

## Connect remote users easier

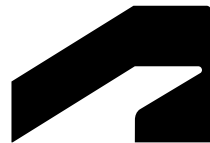
With VPN-less technology, remote access to data behind the firewall is easier with Vault Gateway



**Participants**

## Better ways to provide feedback

Providing the ability to markup in multiple workflows with better management of markup history

An abstract, three-dimensional geometric structure on the left side of the slide, composed of transparent, faceted planes that create a sense of depth and modern design.

# Authors

Focus on the work you love

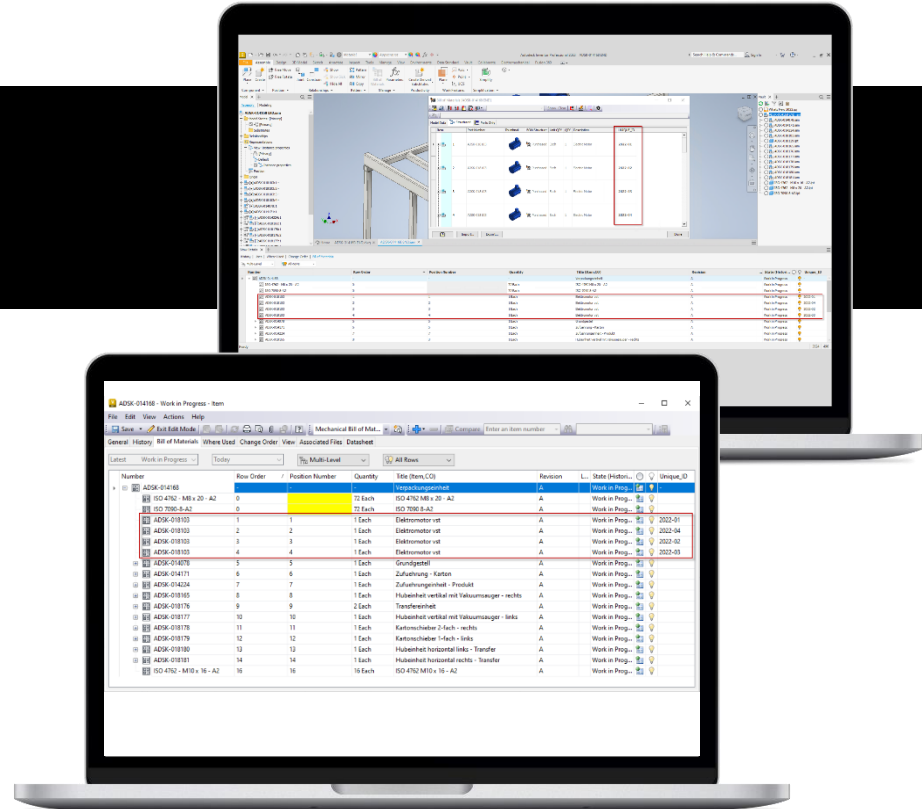
# Instance Properties Support

## Customer value

Access Instance Properties in Vault without having to go back to Inventor

## Deliverable

Added support for Inventor Instance Properties in Vault to assign properties to individual component instances. Instance properties work the same way as Item property occurrence within the Vault Bill of Materials (BOM). The model's instance property value groups items with the same part number. If no instance properties exist, the BOM works the same as the previous releases.



# AutoCAD Add-in Enhancements

## Customer value

Focus on your design tasks while accessing data management capabilities for optimum efficiency

## Deliverable

### Show Detail

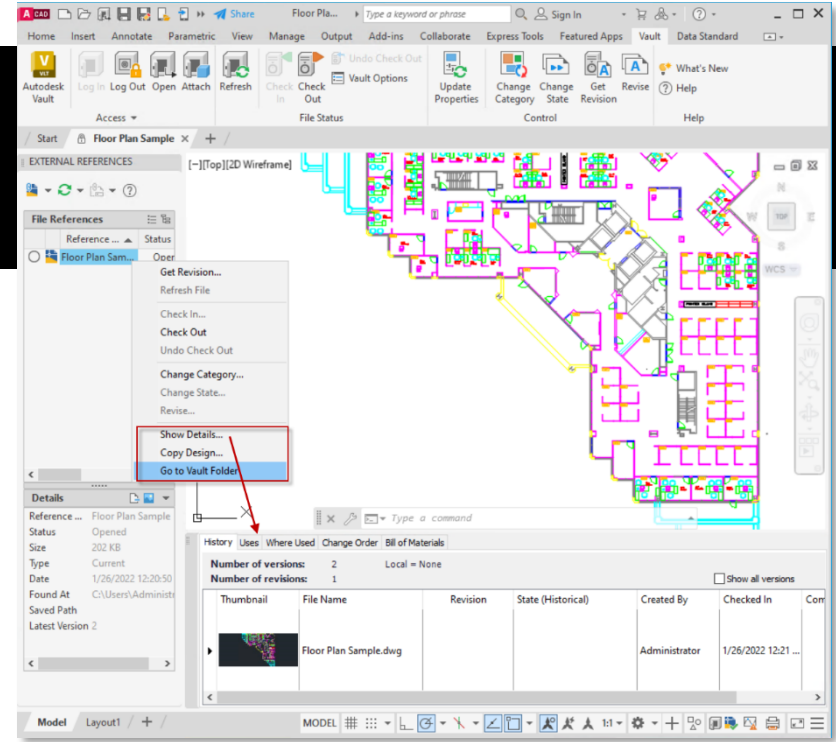
Use Show Details to view information from Vault about designs and perform common Vault tasks.

### Go to Vault Folder

Use Go to Vault Folder command to directly go to a file in Vault from within AutoCAD.

### Copy Design

Start Copy Design directly in AutoCAD and configure your copy as usual.



# User Interface Enhancements

## Customer value

Users will have a consistent, cohesive visual experience using the Vault desktop, thin, and mobile clients.

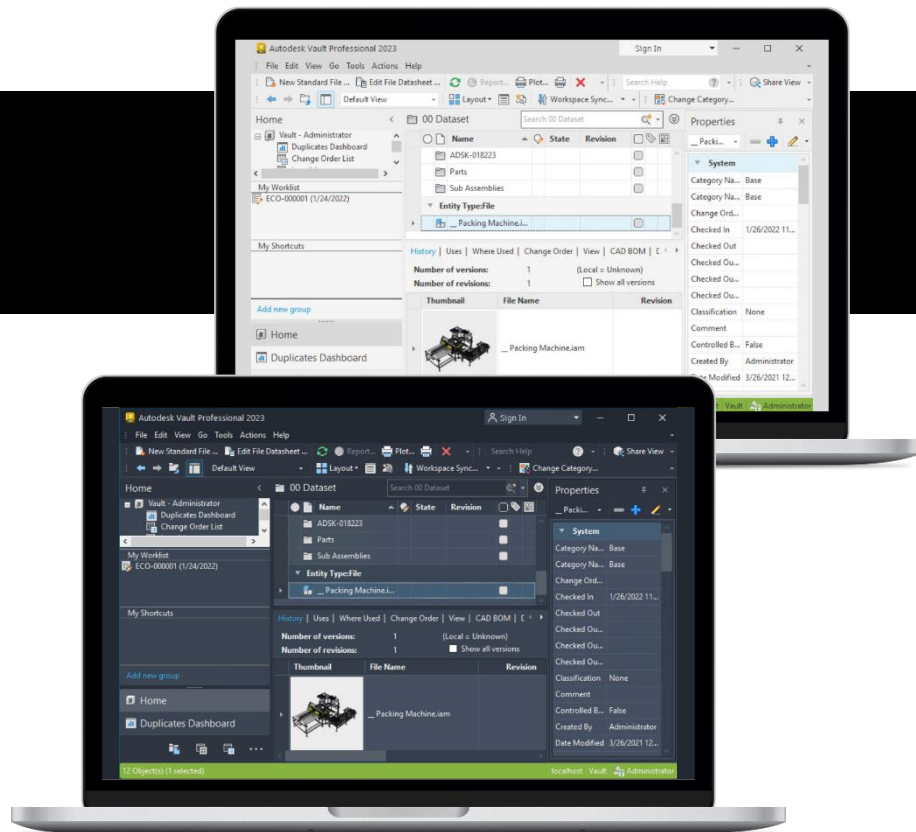
## Deliverable

### Themes

Switch between Dark, Light, and Default (Classic) themes to reflect the visual alignment with other adjacent products from Autodesk. The user interface theme controls the color of the application icons, frame, background, property panels, and dialogs.

### Icon Refresh

Vault icons are updated and refreshed to complement the Dark/Light theme interface. The new Vault icons are simple, modern, and have better color accessibility for all users.



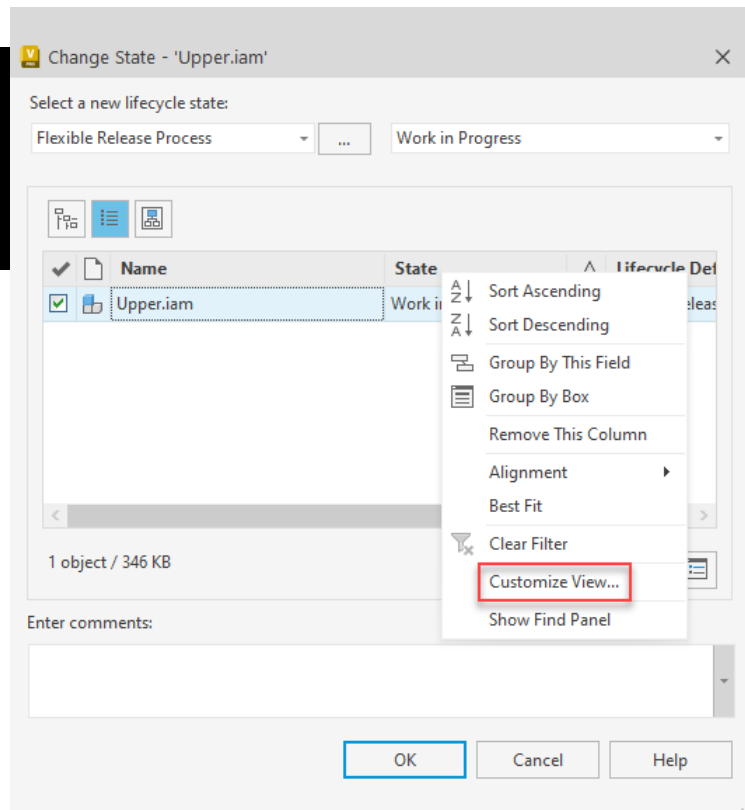
# Column Customization

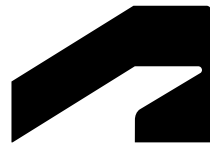
## Customer value

Access to valuable data while performing essential tasks and workflows in Vault through customization options.

## Deliverable

Customize view functionality is added to adjust the view of the columns in several dialogs (Change State, Change Revision, Change Category, Pack and Go, Synchronize Properties, Undo Check Out). By making efficient use of properties and customizing your view, data management becomes much more tailored to your project.



A close-up, low-angle shot of a smartphone, showing the metallic frame and the screen. The phone is tilted, and the lighting creates strong highlights and shadows on the metal edges.

# Administrators

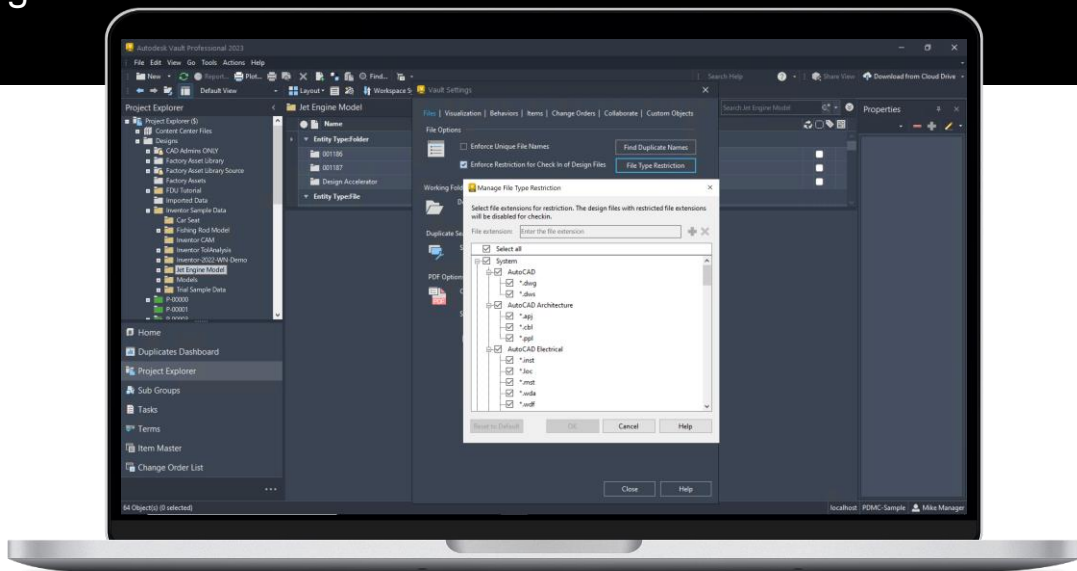
Connect remote users easier



# Customer value

## Deliverable

Also, administrators can add the file extensions to the user-defined list for more flexibility. However, administrators cannot remove the system default file extensions.



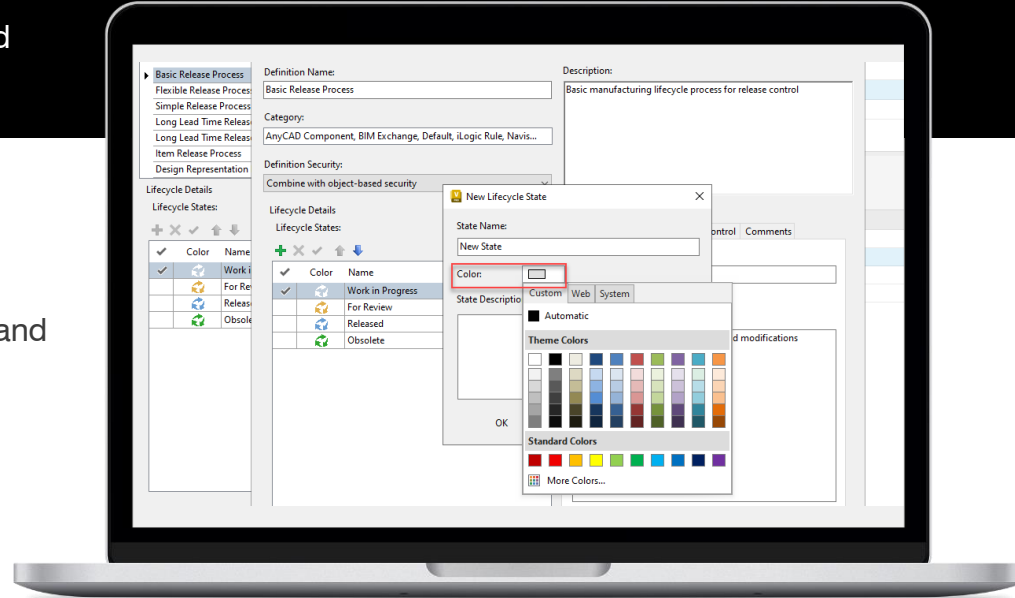
# Lifecycle state colors

## Customer value

Users can easily recognize the state of files in the file grid by color like categories.

## Deliverable

Lifecycle Definition settings are enhanced to allow color customization to indicate a lifecycle state. You can now quickly identify lifecycle states by color across all clients and user interfaces.



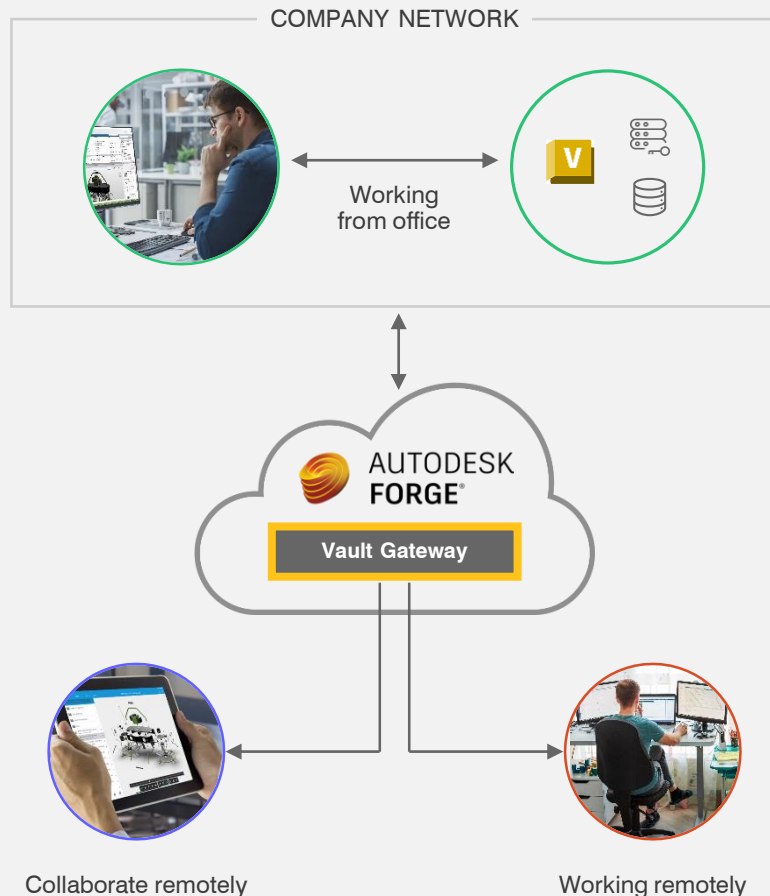
# Vault Gateway

## Customer value

Vault Gateway allows better collaboration with suppliers and 3<sup>rd</sup> party collaborators.

## Deliverable

Vault Gateway was developed to provide secure remote access to users working remotely. As a result, remote users can create and manage design data in Vault and enjoy the same experience as in the office. In addition, Vault Gateway allows VPN-less access to Vaulted data behind the firewall with no additional configurations required on the Vault client.



# Vault Basic Entitlement

## Deliverable

Vault Basic can be used by users who have a license to products which have the Vault Basic entitlement. Vault Basic is an entitlement to the following products.

- Inventor Professional
- 3DS Max
- AutoCAD with Specialized Tools
- Product Design & Manufacturing Collection
- Architecture, Engineering & Construction Collection
- Media & Entertainment Collection

Users will be required to login with their Autodesk ID to verify their entitlement.



**AUTODESK**  
**Vault Basic**  
**2023**

An abstract, three-dimensional geometric structure on the left side of the slide, featuring transparent and reflective surfaces in shades of grey and black, creating a complex, crystalline form.

# Participants

Better ways to provide feedback

# Markups

## Customer value

Users can markup designs in more Vault areas, which increases the chance to collaborate more through the design process.

## Deliverable

### Markup browsing panel

You can filter markups based on who created the markup and the creation date. You can view, rename, and delete the markup through the panel. You can also collapse/expand the panel window.

### Saving markups

You can save the markup as an image on your local machine or save it as data on the Vault. The markup saved as data is listed in the Markup Browsing Panel.

### Markup in ECO

You can view markup within ECO using Autodesk Viewer, make changes to the markup, and save it as data in the Vault.



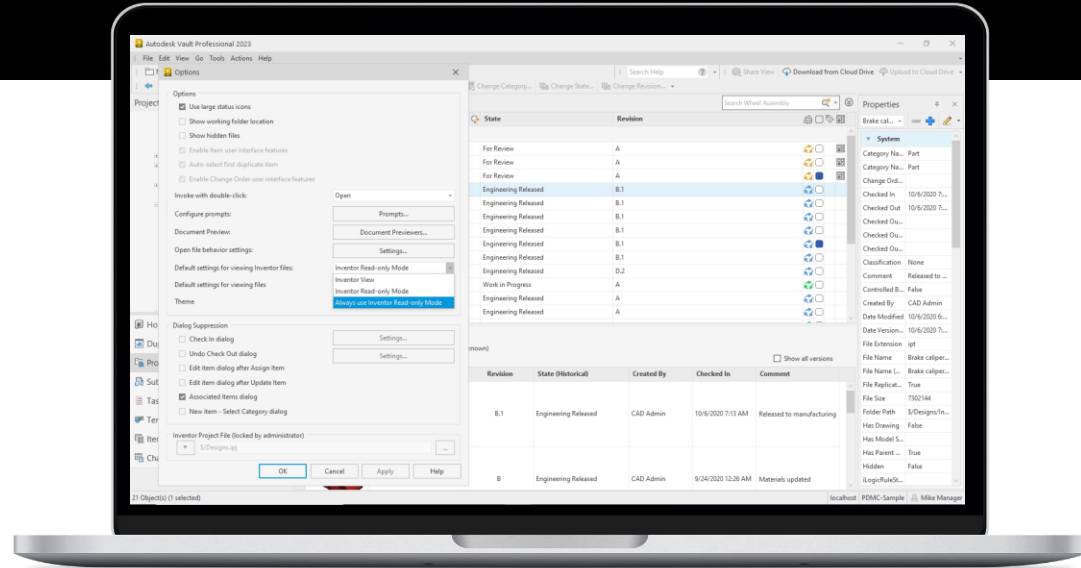
# Inventor Read-Only Mode

## Customer value

More flexibility to control how Inventor files are viewed.

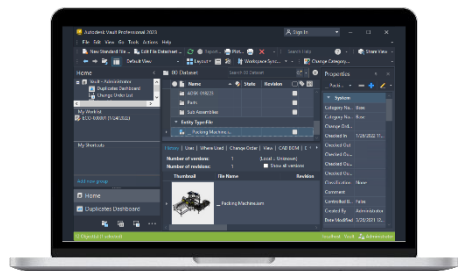
## Deliverable

A new option called "Always use Inventor Read-only mode" is added to Vault Options for viewing the Inventor files setting. Selecting this option causes the Vault client to always use Inventor Read-Only regardless of whether the DWF file is available.



# Vault 2023: Collaboration is easier than ever

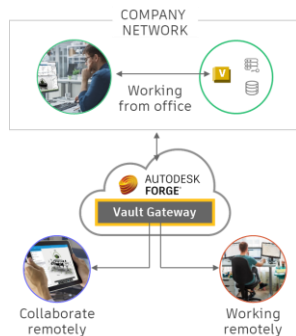
Continues to deliver a more modern, connected, and insightful experience



**Authors**

## Focus on the work you love

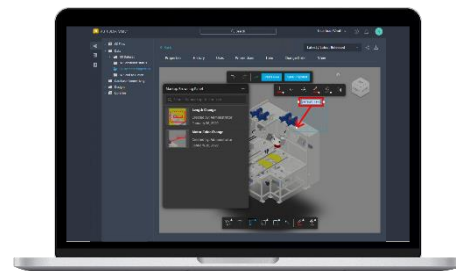
Improved AutoCAD integrated data experience, additional Model State support, and user interface enhancements



**Administrators**

## Connect remote users easier

With VPN-less technology, remote access to data behind the firewall is easier with Vault Gateway



**Participants**

## Better ways to provide feedback

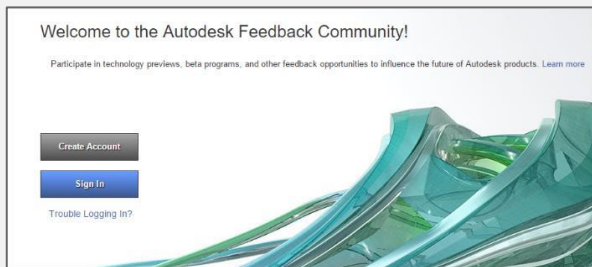
Providing the ability to markup in multiple workflows with better management of markup history



# Make Your Voice Heard

## Vault Feedback Community

<https://autode.sk/VaultFeedback>



## Vault Ideas Page

<https://autode.sk/vaultidea>

### Vault Ideas

Share ideas for future product features directly with the Vault team and collaborate on existing suggestions with your peers.

[SUBMIT IDEA](#)





Autodesk and the Autodesk logo are registered trademarks or trademarks of Autodesk, Inc., and/or its subsidiaries and/or affiliates in the USA and/or other countries. All other brand names, product names, or trademarks belong to their respective holders. Autodesk reserves the right to alter product and services offerings, and specifications and pricing at any time without notice, and is not responsible for typographical or graphical errors that may appear in this document.

© 2022 Autodesk. All rights reserved.